

Established 1962



COMMERCIAL REAL ESTATE

**CORFAC**  
International

# **CHAS. HAWKINS Co., Inc. / CORFAC INTERNATIONAL**

## **AVAILABLE FOR SUBLEASE**

**100 WINNERS CIRCLE – MARYLAND FARMS - BRENTWOOD**



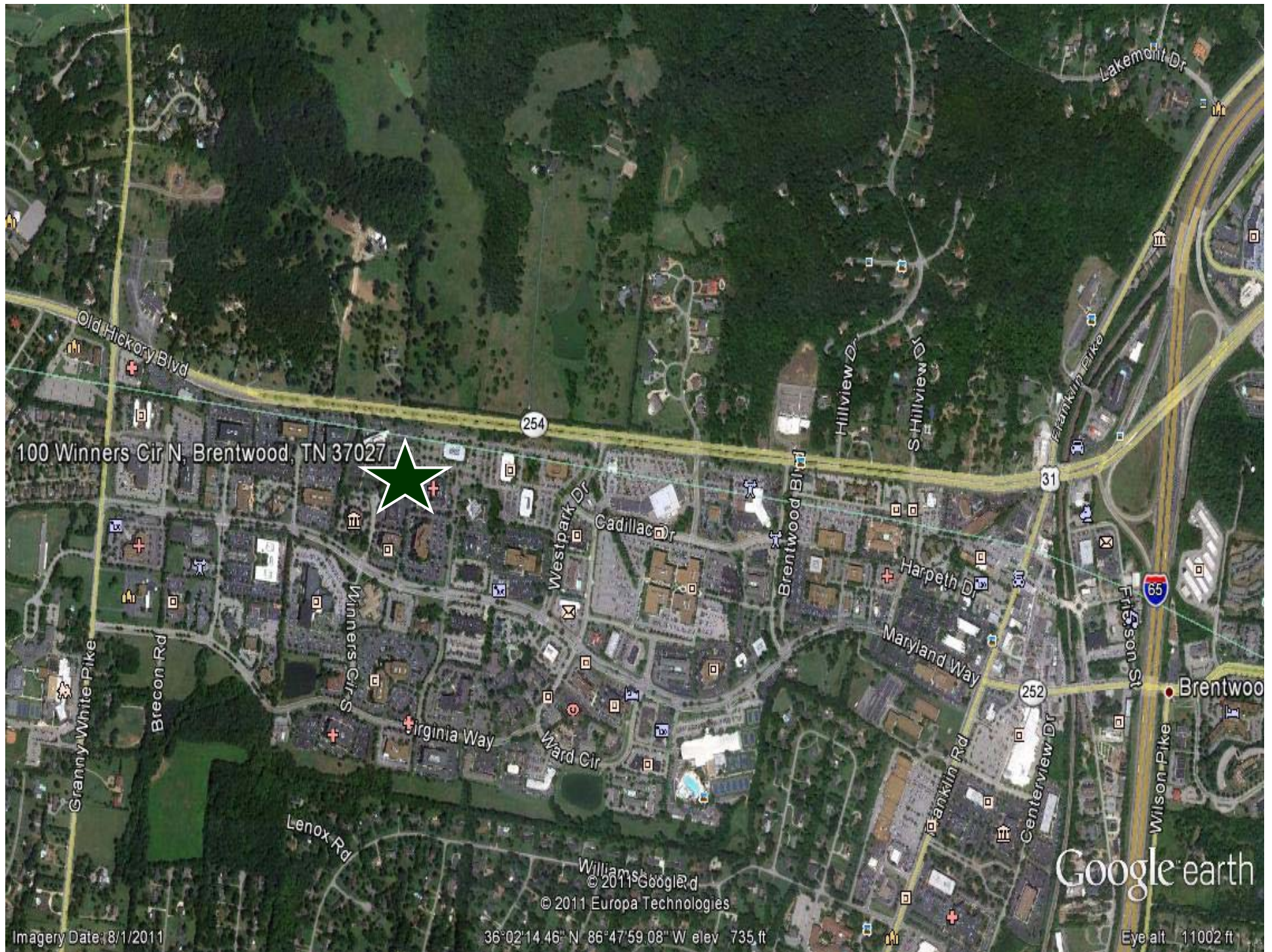
Exclusively Listed by  
Chas. Hawkins Co., Inc. /  
CORFAC International  
[www.chashawkins.com](http://www.chashawkins.com)

**R. Stephen Prather**  
**615.345.7254 (office)**  
**615.818.8429 (cell)**

**±1,321 Square Foot Class A Office Suite**  
**Available for Sublease in Maryland Farms at**  
**100 Winners Circle - First Floor Space**

776 Melrose Avenue ♦ Nashville, TN 37211 ♦ Phone 615-256-3189 ♦ 615-254-4026 Facsimile [www.chashawkins.com](http://www.chashawkins.com)

- **SQUARE FOOTAGE: ±1,321 RENTABLE SQUARE FEET - SUITE 120**
  - GROUND LEVEL SPACE
- **SUBLEASE RATE:**
  - **\$21.58 PER RENTABLE SQUARE FOOT - FULL SERVICE RATE**
  - **\$2,375.60 PER MONTH**
- **SUBLEASE TERM: CURRENT TERM EXPIRES JUNE 30, 2015**
- **LAYOUT (SEE ATTACHED FLOOR PLAN):**
  - RECEPTION AREA, FOUR OFFICES, COPY ROOM, OPEN WORK AREA, AND  
BREAK ROOM
- **LOCATION: 100 WINNERS CIRCLE - MARYLAND FARMS - BRENTWOOD**
- **FOUR-STORY, ±73,470 SQUARE FOOT, CLASS A OFFICE BUILDING WAS BUILT IN 1988 AND RENOVATED IN 1999**
- **PARKING RATIO FOR BUILDING OF 3.96: 1,000 SQUARE FEET**
- **INDIVIDUAL OFFICES ALSO AVAILABLE FOR LEASE: LEASE RATE ON INDIVIDUAL OFFICES IS NEGOTIABLE**



100 Winners Cir N, Brentwood, TN 37027



Imagery Date: 8/1/2011

© 2011 Google  
© 2011 Europa Technologies  
36°02'14.46" N 86°47'59.08" W elev 735 ft

Google earth  
Eye alt 11002 ft