

Established 1962



COMMERCIAL REAL ESTATE

CORFAC International

# CHAS. HAWKINS Co., Inc. / CORFAC INTERNATIONAL

## AVAILABLE FOR LEASE

### 1209 16<sup>TH</sup> AVE S – MUSIC ROW

±280 SF – 3,078 SF AVAILABLE FOR LEASE

**1<sup>st</sup> Floor – ±1,408 sf**

**2<sup>nd</sup> Floor - ±1,390 sf**

**3<sup>rd</sup> Floor - ±280 sf**



Exclusively Listed by  
Chas. Hawkins Co., Inc. /  
CORFAC International  
[www.chashawkins.com](http://www.chashawkins.com)

**R. Stephen Prather**

**615.345.7254**

**615.818.8429**

[sprather@chco.com](mailto:sprather@chco.com)

**Kim Camp**

**615.345.7226**

**615.477.6237**

[kcamp@chco.com](mailto:kcamp@chco.com)

## Up to Three Floors Available for Lease on Music Row at 1209 16<sup>th</sup> Ave S

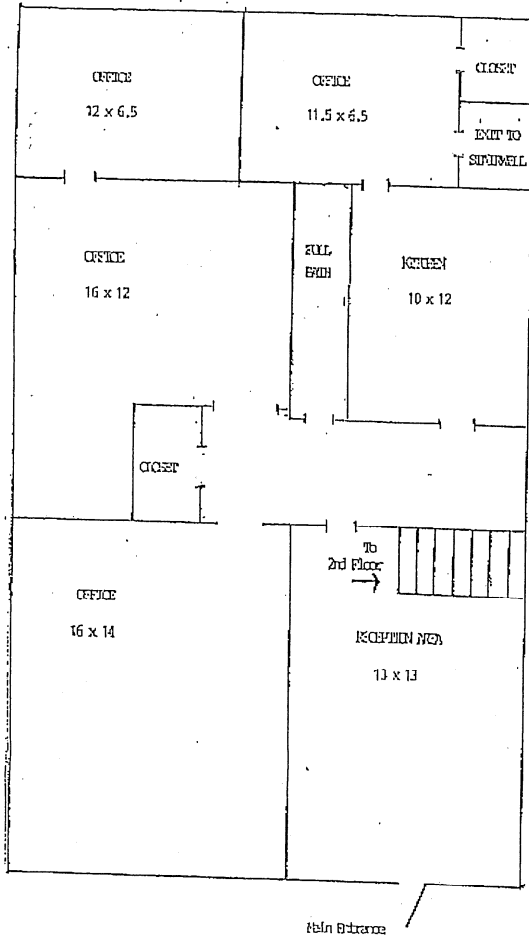
- 1<sup>st</sup> Floor – 1,408 sf Available
  - 4 offices, reception area, full bath, and kitchen
  - **Asking Rent = \$2,400 per month – Rate includes taxes, insurance, CAM – Tenant responsible for share of utilities**
- 2<sup>nd</sup> Floor – 1,390 sf Available
  - 4 offices, full bath, and storage closets
  - **Asking Rent = \$2,200 per month - Rate includes taxes, insurance, CAM – Tenant responsible for share of utilities**
- 3<sup>rd</sup> Floor - ±280 sf Available
  - 2 Conference Room Size Offices
  - **Asking Rent - Negotiable**
- 12 total parking spaces
  - 11 parking spaces in rear of the building and 1 in front
- Storage rooms potentially available in finished basement

776 Melrose Avenue ♦ Nashville, TN 37211 ♦ Phone 615-256-3189 ♦ 615-254-4026 Facsimile [www.chashawkins.com](http://www.chashawkins.com)

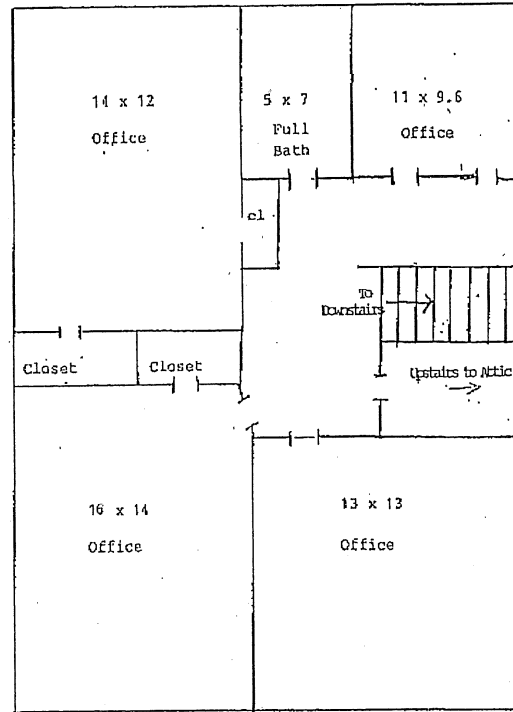
*No warranty or representation, expressed or implied, is made as to the accuracy of the information contained herein, and same is submitted subject to errors, omissions, changes of price, withdrawals without notice, and to any specific conditions imposed by our principal*



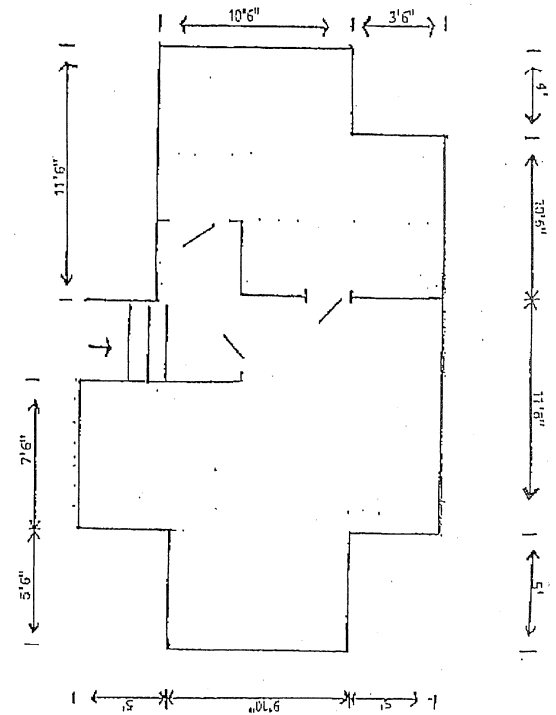
### First Floor

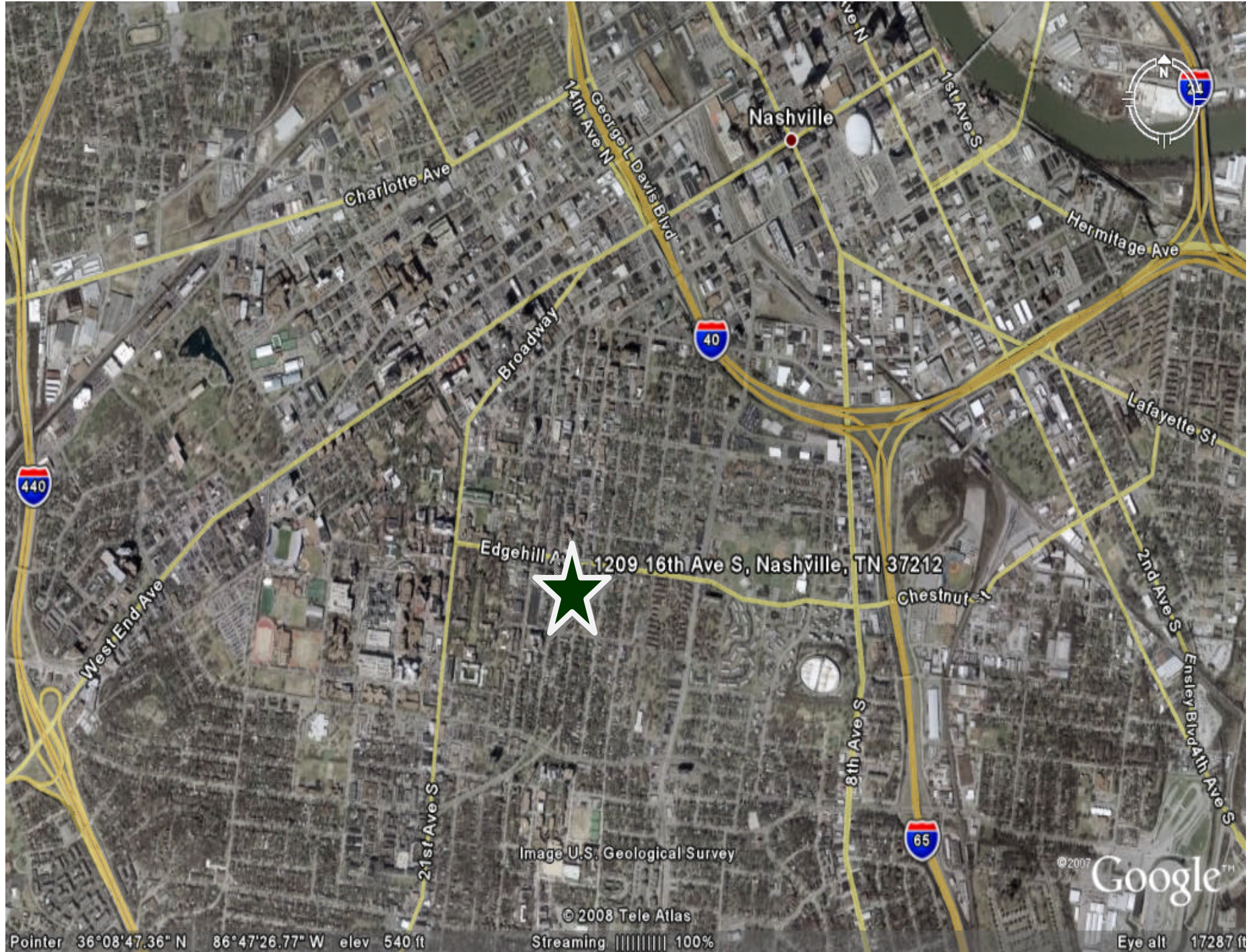


### Second Floor



### 3RD FLOOR





1209 16th Ave S, Nashville, TN 37212

Image U.S. Geological Survey

© 2008 Tele Atlas

Streaming ||||| 100%

© 2007 Google™

Pointer 36°08'47.36" N 86°47'26.77" W elev 540 ft

Eye alt 17287 ft