

Established 1962



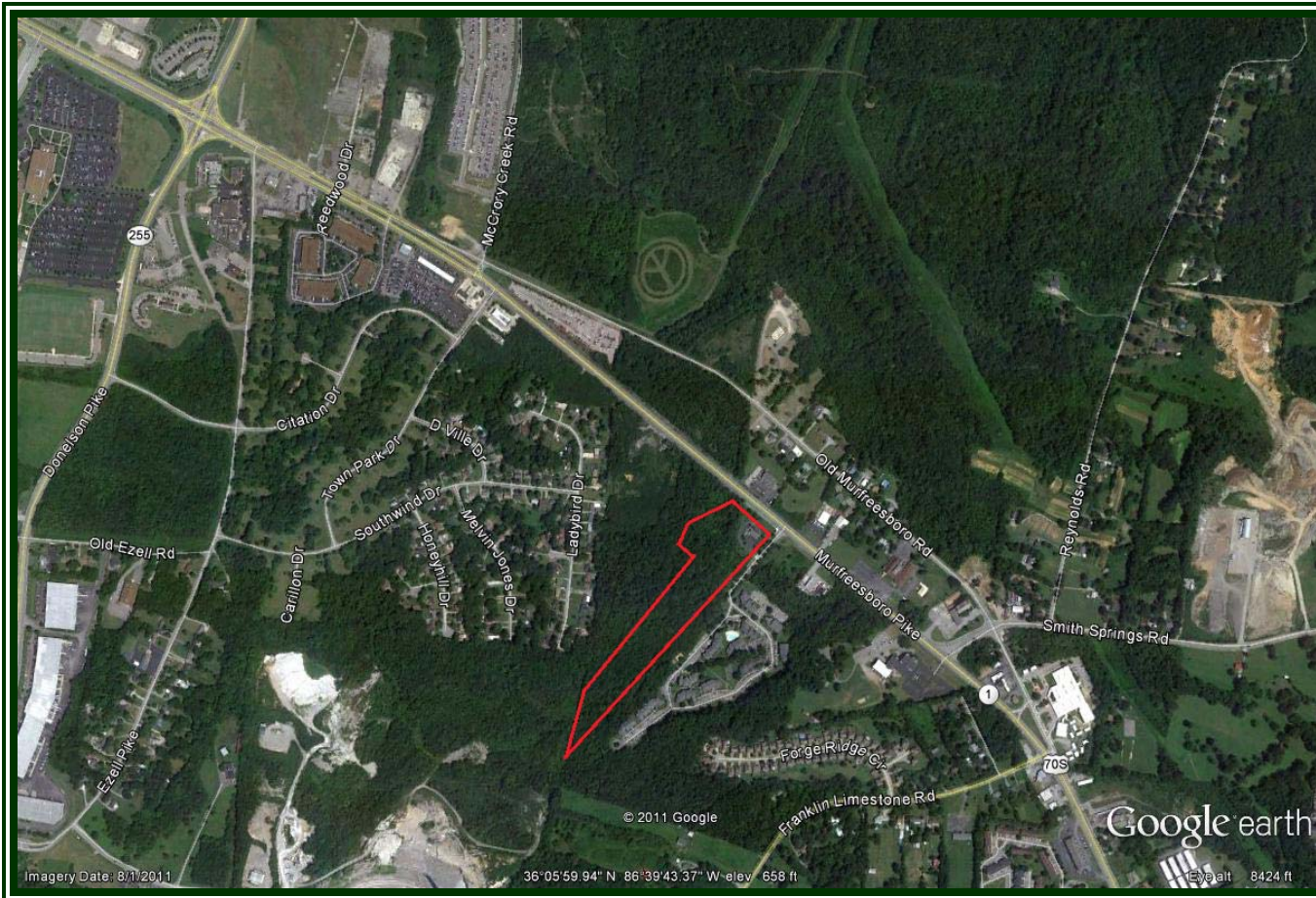
COMMERCIAL REAL ESTATE

CORFAC
International

CHAS. HAWKINS Co., Inc. / CORFAC INTERNATIONAL AVAILABLE FOR SALE: ALL OR PART

1827 MURFREESBORO PIKE

±12.22 ACRES FOR SALE



Exclusively Listed by
Chas. Hawkins Co., Inc. /
CORFAC International
www.chashawkins.com

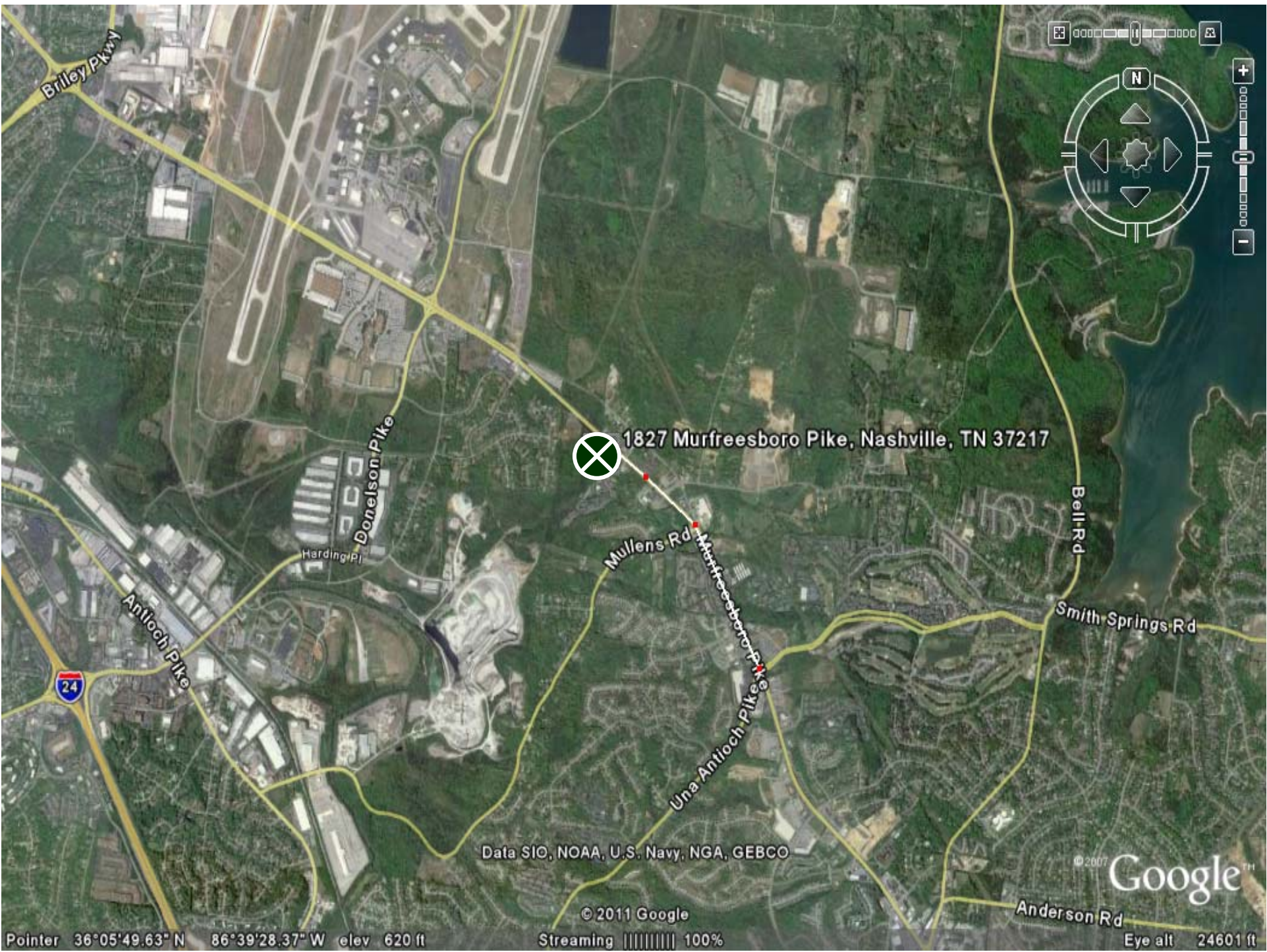
R. Stephen Prather
615.345.7254 (office)
615.818.8429 (cell)
sprather@chco.com

Tee Patterson
615.345.7229 (office)
615.476.7100 (cell)
tpatterson@chco.com

776 Melrose Avenue ♦ Nashville, TN 37211 ♦ Phone 615-256-3189 ♦ Facsimile 615-254-4026 ♦ www.chashawkins.com

No warranty or representation, expressed or implied, is made as to the accuracy of the information contained herein, and same is submitted subject to errors, omissions, changes of price, withdrawals without notice, and to any specific conditions imposed by our principal

- Property is located at 1827 Murfreesboro Pike
- ±320 Feet of frontage on Murfreesboro Pike
- Property is approximately 2.0 miles from Nashville International Airport, 1.0 mile from Nashboro Village, and adjacent to the 235-unit Canterchase Apartment complex
- Prime access to planned Harding Place connector; adjacent property has been purchased by TDOT for the future Harding Place extension which will connect I-40 to I-24.
- Easy traffic light access to the property
- Great opportunity for ±12.22 acres of contiguous land
- Free commercial sewer tap fees go with the property to the Purchaser/Developer
- Daily Traffic Count = 32,268
- 41,789 residential properties within 5 miles of property
- 2,585 commercial properties within 5 miles of property
- **Asking Sales Price: \$4.00 per square foot for the entire ±12.22 acres**
 - **\$6.00 per square foot for property with Murfreesboro Pike frontage**



1827 Murfreesboro Pike, Nashville, TN 37217

Pointer 36°05'49.63" N 86°39'28.37" W elev 620 ft

© 2011 Google Streaming 100%

© 2007 Google™ Eye alt 24601 ft

Data SIO, NOAA, U.S. Navy, NGA, GEBCO