

Established 1962



COMMERCIAL REAL ESTATE

**CORFAC**  
International

# **CHAS. HAWKINS Co., Inc. / CORFAC INTERNATIONAL**

## **AVAILABLE FOR LEASE**

### **1827 MURFREESBORO PIKE**

#### **FORMER REGIONS BANK DRIVE-THRU AVAILABLE FOR LEASE**



Exclusively Listed by  
Chas. Hawkins Co., Inc. /  
CORFAC International  
[www.chashawkins.com](http://www.chashawkins.com)

**R. Stephen Prather**  
**615.345.7254 (office)**  
**615.818.8429 (cell)**  
[sprather@chco.com](mailto:sprather@chco.com)

**Tee Patterson**  
**615.345.7229 (office)**  
**615.476.7100 (cell)**  
[tpatterson@chco.com](mailto:tpatterson@chco.com)

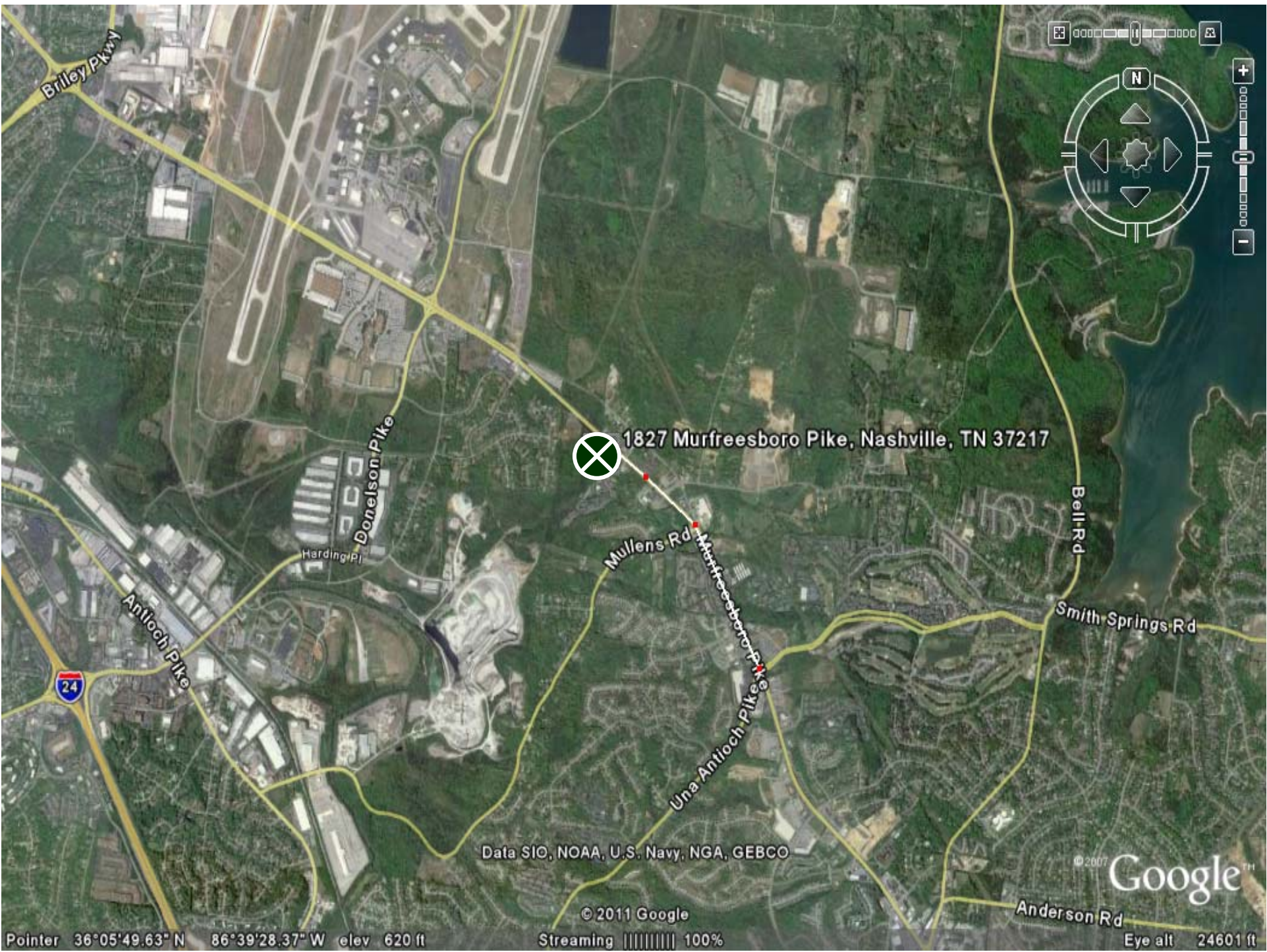
**Former Regions Bank Drive-Thru Available for Lease at 1827 Murfreesboro Pike –  
Property is Located ±2.0 Miles from Nashville International Airport, ±1.0 Mile from  
Nashboro Village and ±0.08 Miles from the 235-Unit Canterchase Apartments**

776 Melrose Avenue ♦ Nashville, TN 37211 ♦ Phone 615-256-3189 ♦ Facsimile 615-254-4026 ♦ [www.chashawkins.com](http://www.chashawkins.com)

*No warranty or representation, expressed or implied, is made as to the accuracy of the information contained herein, and same is submitted  
subject to errors, omissions, changes of price, withdrawals without notice, and to any specific conditions imposed by our principal*

- Property is located at 1827 Murfreesboro Pike
- Property was formerly used by Regions Bank for a drive-thru retail banking operation
- Property is approximately 2.0 miles from Nashville International Airport, 1.0 mile from Nashboro Village, and 0.08 miles from the 235-unit Canterchase Apartment complex
- Building has  $\pm 522$  square feet of office/bank space with restroom and small break room area
- Building has infrastructure in place for existing drive-thru retail banking operation
- 5 drive-thru lanes for retail banking traffic
- Building sits on 1.47 acres of land
- The bank can also be purchased
- Daily Traffic Count = 32,268
- Asking Lease Rate = \$3,650.00 per month – Net of Taxes, Insurance, CAM, and Utilities





1827 Murfreesboro Pike, Nashville, TN 37217

Pointer 36°05'49.63" N 86°39'28.37" W elev 620 ft

Data SIO, NOAA, U.S. Navy, NGA, GEBCO

© 2011 Google

Streaming ||||| 100%

© 2007 Google™

Eye alt 24601 ft