

Established 1962



COMMERCIAL REAL ESTATE



CHAS. HAWKINS Co., Inc. / CORFAC INTERNATIONAL DEVELOPMENT OPPORTUNITY

1907, 1909, & 1911 CONVENT PLACE DEVELOPMENT SITE - ±0.68 ACRES OF LAND FOR SALE

Exclusively Listed by
Chas. Hawkins Co., Inc. /
CORFAC International
www.chashawkins.com

R. Stephen Prather
615.345.7254
615.818.8429
sprather@chco.com

Bill Hawkins, SIOR
615.345.7204
bhawkins@chco.com



RM40 Zoning

FAR = 1.00

ISR = 0.75

Setbacks:

- **Front = 25'**
- **Rear = 20'**
- **Side = 0'**

0.68 Acres of Land Available for Sale on Convent Place

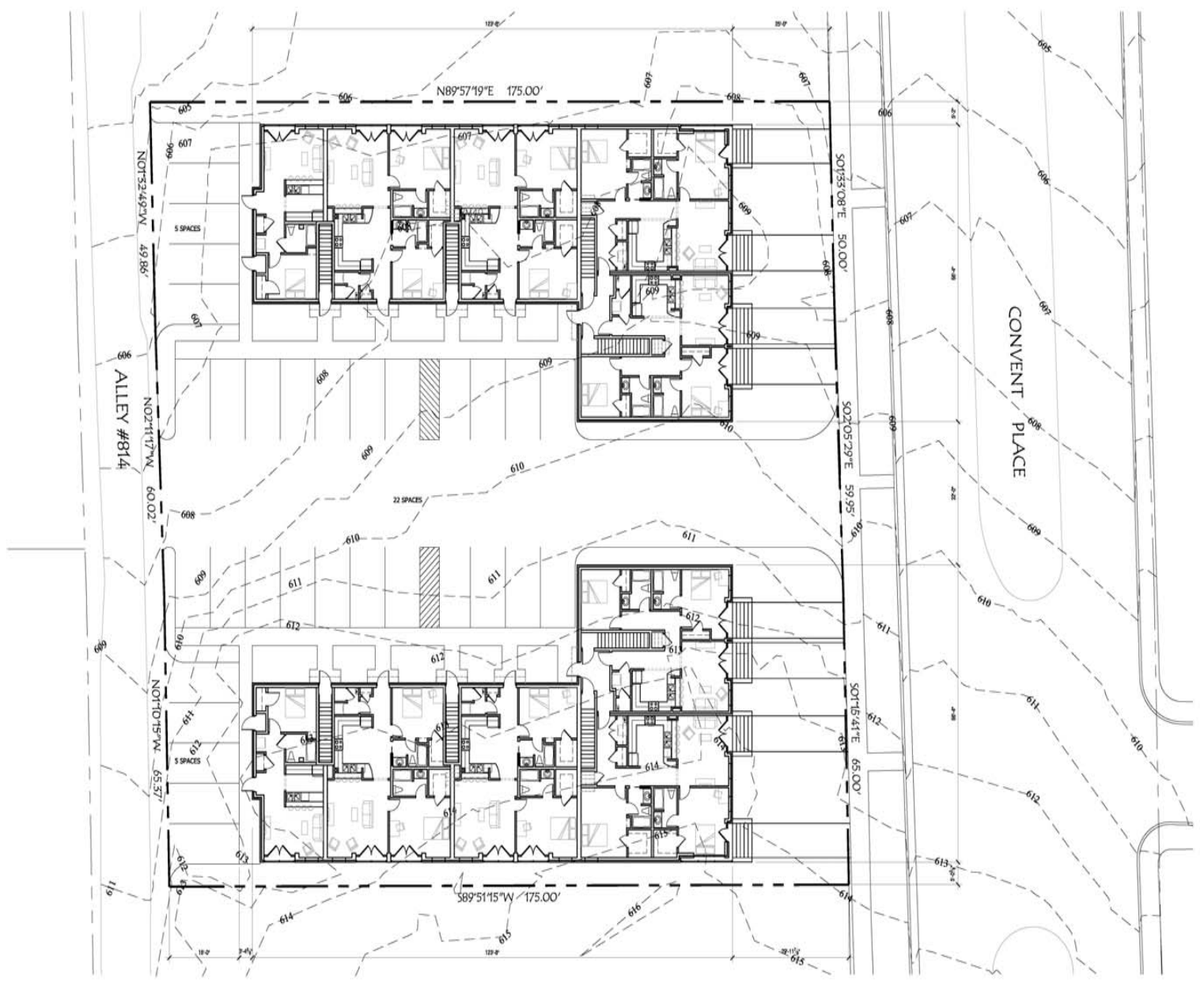
Property is approximately 1.0 mile from I-440, 1.70 miles from I-65, 0.75 miles from Vanderbilt University, and 0.75 miles from Belmont University

776 Melrose Avenue ♦ Nashville, TN 37211 ♦ Phone 615-256-3189 ♦ 615-254-4026 Facsimile www.chashawkins.com


No warranty or representation, expressed or implied, is made as to the accuracy of the information contained herein, and same is submitted subject to errors, omissions, changes of price, withdrawals without notice, and to any specific conditions imposed by our principal



- 1907, 1909, and 1911 Convent Place – Map 104_11; Parcels 185, 186, and 187
- Total acreage = 0.68 acres – 29,620.80 square feet of land
- RM40 Zoning
 - From Zoning Code: “These districts are designed for high intensity multifamily developments, typically characterized by mid and high-rise structures and structured parking. These districts are appropriate for implementing the residential high density policies of the general plan. Based on locational policies, they also may be appropriate in regional activity centers, within the downtown core, and in areas policed for concentrations of office and mixed commercial development. These districts should have good access to arterial streets and public transportation service.”
- Development Guidelines:
 - FAR = 1.0
 - ISR = 0.75
 - Setbacks:
 - Front = 25’
 - Rear = 20’
 - Side = 0’
- Owner has architectural and site plans for a 28 unit apartment/condo project (see site plan and rendering below)



PROPOSED
1 SITE PLAN
 SCALE: 3/32" = 1'-0"



Lambe+Associates, LLC
 architecture • planning • design/build
 CONVENT PLACE AT CONVENT PLACE

Lambe + Associates, LLC
 100 Mission Court, Suite 303
 Franklin, TN 37067
 phone: 615.711.8887
 website: lambe.com

This drawing and the design herein are the property of the Architect. The reproduction, copying, or use of this drawing without the written consent of the Architect and the registration of the Architect is prohibited.

Consultants

Project

RESIDENTIAL DEVELOPMENT AT
CONVENT PLACE
 DEVELOPER: GRAYMONT GROUP, INC.
 NASHVILLE, TENNESSEE

REV.	DATE
△	
△	
△	

L+A Job No. 0711
 04.08.08

Proposed
 Site
 Plan

C.10
 sheet



PROPOSED
2
 NORTH ELEVATION
 SCALE: 1/8" = 1'-0"



PROPOSED
1
 EAST ELEVATION
 SCALE: 1/8" = 1'-0"

Lambe+Associates, LLC
 ARCHITECTURE • PLANNING • DESIGN/BUILD
 CREATIVE ARCHITECTURE OF BUILDINGS

Lambe + Associates, LLC
 100 Mission Court, Suite 303
 Franklin, TN 37067
 phone: 615.771.8811
 www.lambe.com

The drawings and the design herein is the property of the architect. The architect warrants that the drawings are prepared and the information is as stated to the best of the architect's knowledge.

Consultants

Project

RESIDENTIAL DEVELOPMENT AT
CONVENT PLACE
 DEVELOPER: GRAYMONT GROUP, INC.
 NASHVILLE, TENNESSEE

REV.	DATE
△	
△	
△	

L+A Job No. 0711
 04.08.08

Proposed
 Building
 Elevations

A4.1
 sheet