

Established 1962



COMMERCIAL REAL ESTATE

**CORFAC**  
International

**CHAS. HAWKINS Co., Inc. / CORFAC INTERNATIONAL**

**AVAILABLE FOR LEASE**

**WILLOW TRACE I – 820 FESSLERS PARKWAY**



Exclusively Listed by  
Chas. Hawkins Co., Inc. / CORFAC  
International

[www.chashawkins.com](http://www.chashawkins.com)

**R. Stephen Prather**

**615.345.7254**

**615.818.8429**

[sprather@chco.com](mailto:sprather@chco.com)

**Jonathan Douillard**

**615.345.7233**

[jdouillard@choc.com](mailto:jdouillard@choc.com)

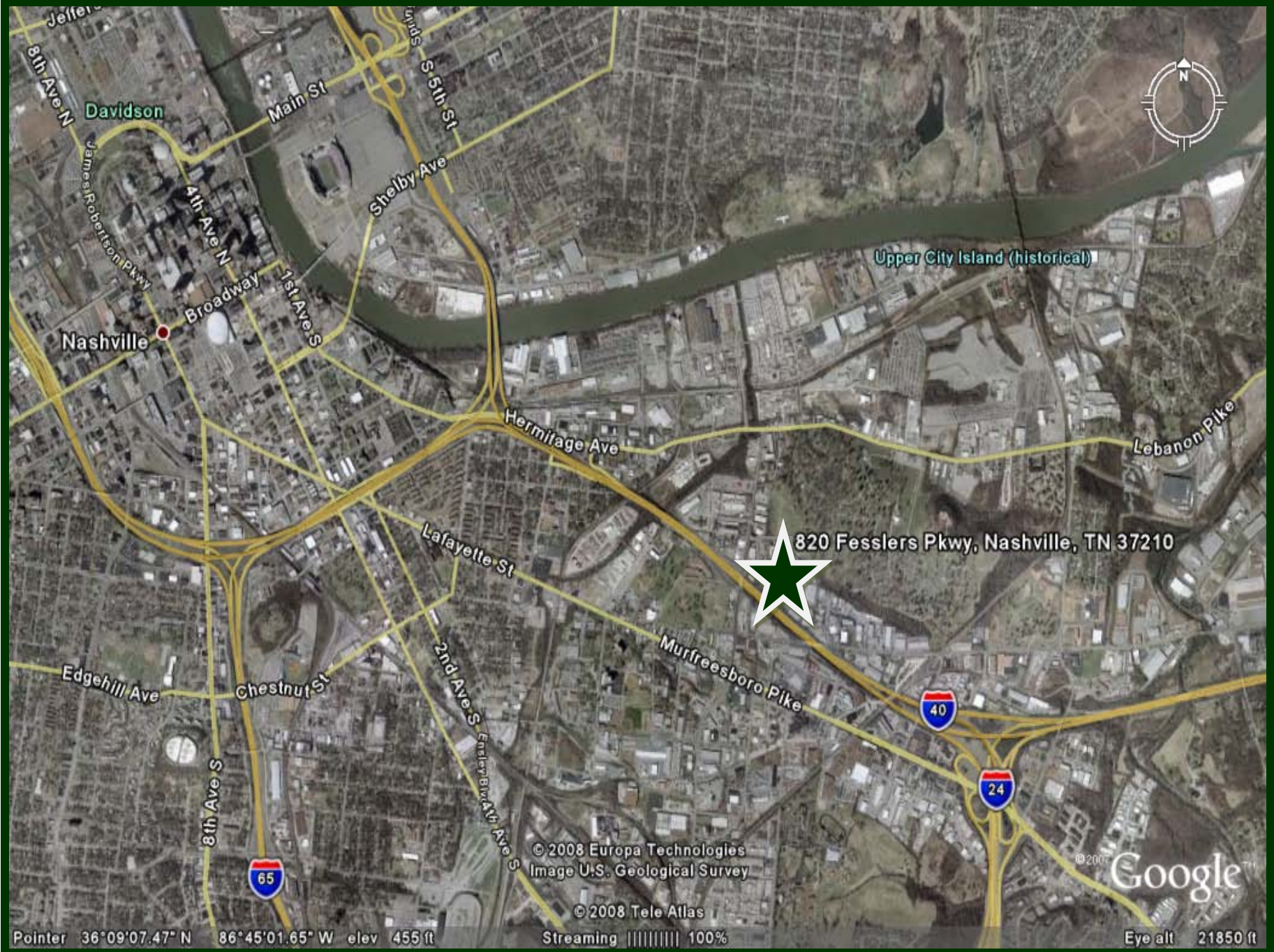
**±1,967 Square Foot Suite Available for Lease  
at Willow Trace I – 820 Fesslers Parkway**

*Property is approximately 0.19 miles from I-24, and 2.2 miles from LP Field*

776 Melrose Avenue ♦ Nashville, TN 37211 ♦ Phone 615-256-3189 ♦ 615-254-4026 Facsimile [www.chashawkins.com](http://www.chashawkins.com)

*No warranty or representation, expressed or implied, is made as to the accuracy of the information contained herein, and same is submitted subject to errors, omissions, changes of price, withdrawals without notice, and to any specific conditions imposed by our principal*

- **RATES: \$7.25 NNN PER SQUARE FOOT**
- **SUITE 205 AVAILABLE FOR LEASE: ±1,967 SQUARE FEET**
  - **716 SQUARE FEET OF WAREHOUSE SPACE WITH A DOCK**
  - **1,251 SQUARE FEET OF OFFICE SPACE**
  - **FLOOR PLAN ATTACHED BELOW**
- **PROPERTY IS LOCATED AT 820 FESSLERS PARKWAY**
  - **LOCATED JUST 0.19 MILES FROM I-24 AND 2.2 MILES FROM LP FIELD**
- **BUILDING WAS BUILT IN 1988**
- **PROPERTY SITS ON 4.35 ACRES OF LAND**
- **SEPARATELY METERED UTILITIES FOR EACH SUITE**
- **NATURAL GAS HEAT**



Davidson

Nashville

Upper City Island (historical)

820 Fesslers Pkwy, Nashville, TN 37210

© 2008 Europa Technologies  
Image U.S. Geological Survey

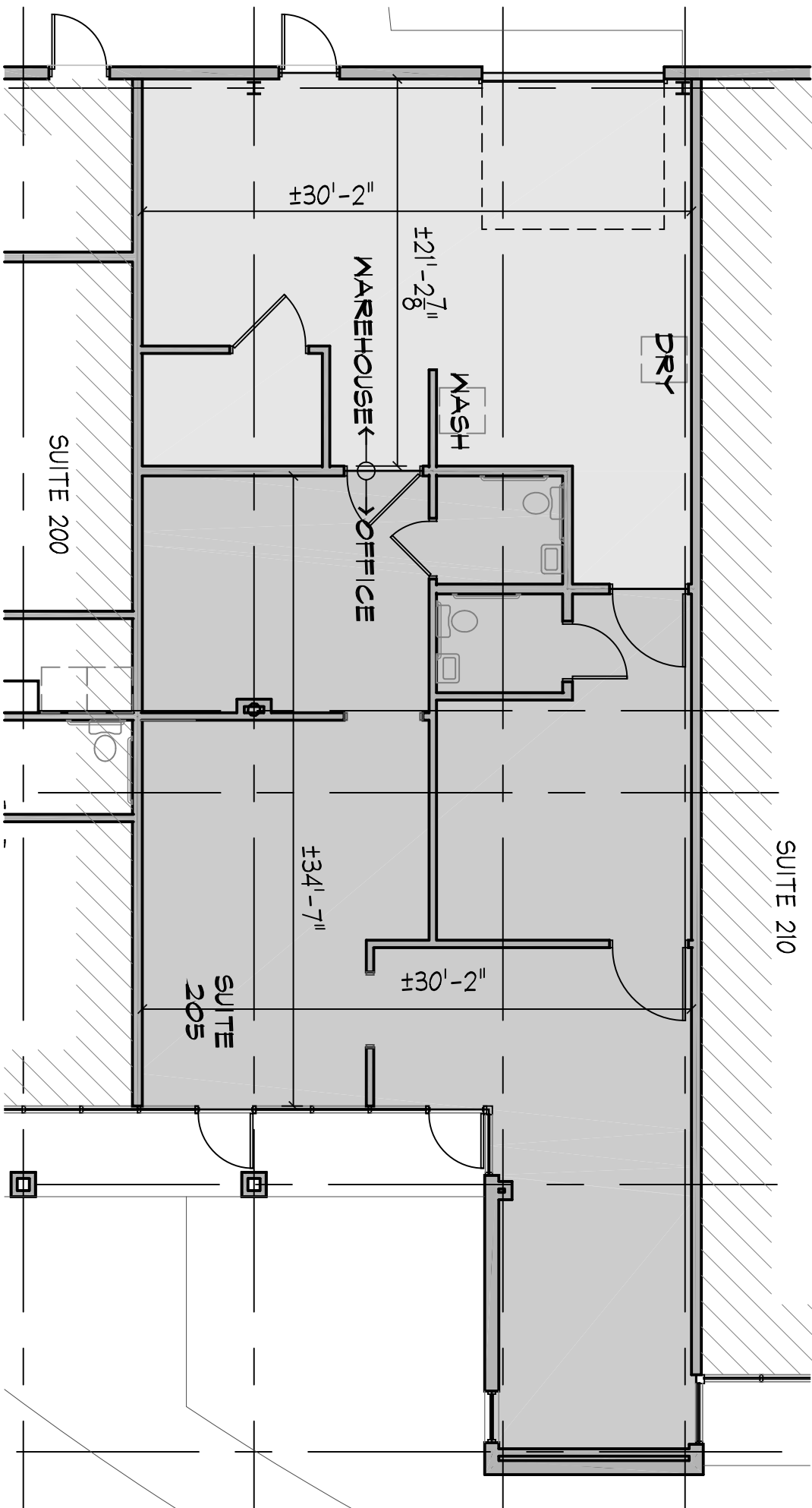
© 2008 Tele Atlas

Google

Pointer 36°09'07.47" N 86°45'01.65" W elev 455 ft

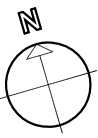
Streaming ||||| 100%

Eye alt 21850 ft



# PULLIAM DESIGN

ARCHITECTURE · INTERIOR DESIGN · PLANNING · GRAPHICS  
 architects@pulliamdesign.com  
 t : 615 . 613 . 5808



820 FESSLERS PKWY

N.T.S. **205**

SUITE 205 AREA:	716.3 S.F.
WAREHOUSE -	1,250.8 S.F.
OFFICE -	
<b>TOTAL:</b>	<b>1,967.1 S.F.</b>

16 MAY 2011