

Established 1962



COMMERCIAL REAL ESTATE



OFFICE SPACE FOR LEASE ±7,600 SF

900 CAPTAIN JOE FULGHAM DRIVE

MURFREESBORO, RUTHERFORD COUNTY

OFFICE
(CAN BE DIVIDED)



- 3,800 SF or 7,600 SF
- Zoned H-1
- Ample Parking
- Built in 2005
- Block / Metal Construction
- New Office Space
- Map 102; Parcel 18.02
- Floor Plans Attached
- Lease Rate: \$9.95 n / SF

Exclusively Listed By:

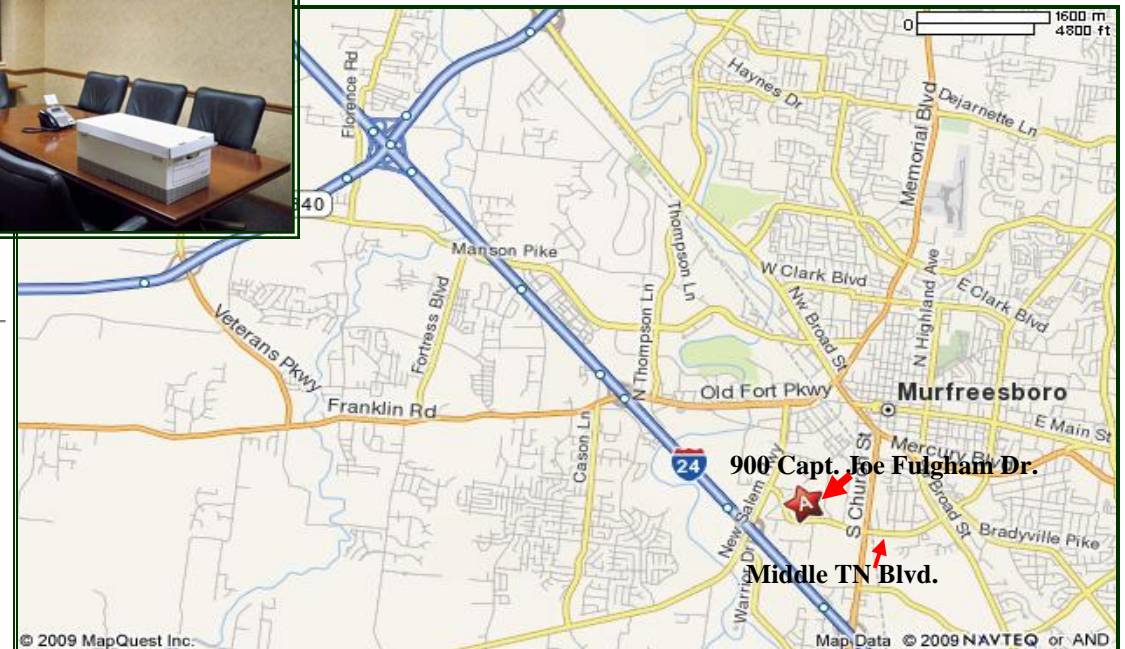
Chas. Hawkins Co., Inc./CORFAC International

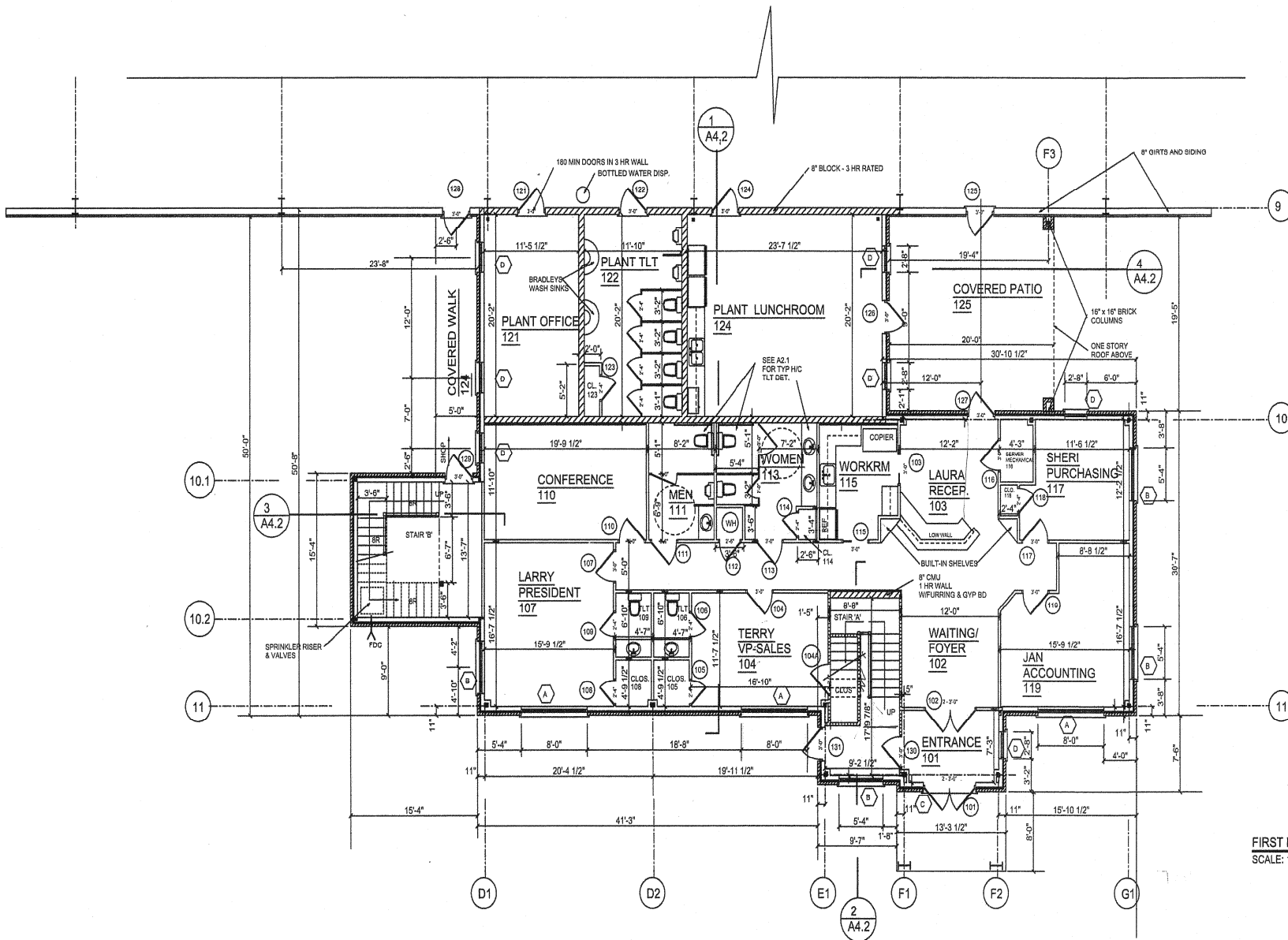
Robert Stout, SIOR

(615) 345-7210 / rstout@chco.com

776 Melrose Avenue Nashville, Tennessee
615.256.3189 phone / 615.254.4026 facsimile

www.chashawkins.com





SEE SHT A1.1 FOR WALL LEGEND

AREA:	
FIRST FLOOR	3809 SF
SECOND FLOOR	3809 SF
TOTAL:	7618 SF

FIRST FLOOR PLAN
SCALE: 1/8" = 1'-0"