

FOR LEASE

566 Mainstream Drive – Suite 700
Metro Center Business Park – Ten Center
Nashville, Tennessee



PROPERTY OVERVIEW

- One (1) Ramp / One (1) Dock
- One – Story Office Building Built in 1982

PROPERTY STATISTICS

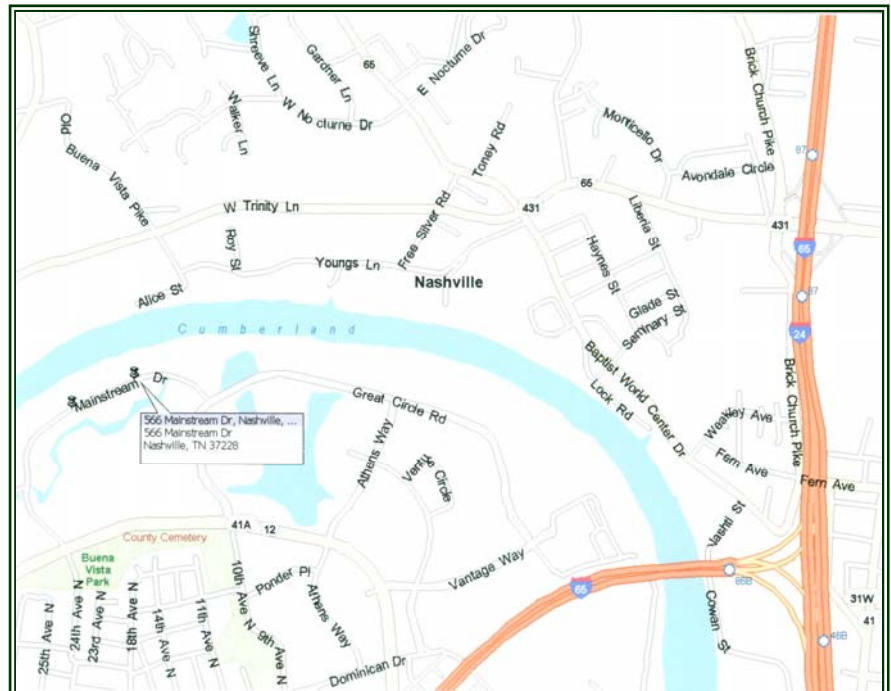
Available SF
±11,275 Sq. Ft.
Suite 700

Sprinkler System
100% Sprinklered

Ceiling Height
21 - 27 Feet

Zoning
Industrial
Warehousing
Distribution (IWD)

Parking Facilities
Free Surface
Spaces



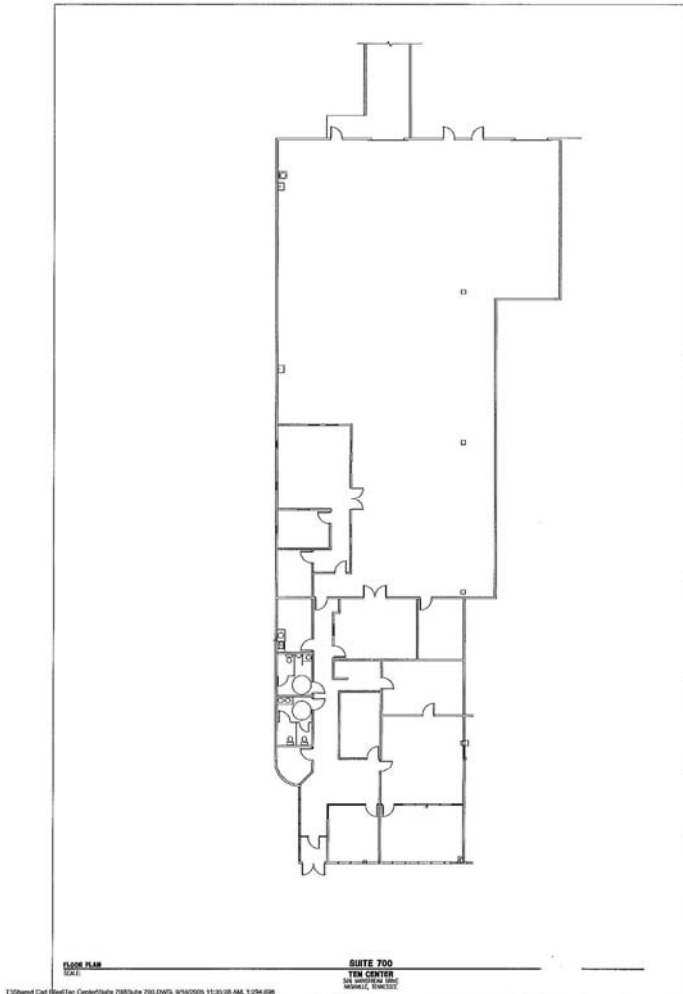
FIRST INDUSTRIAL REALTY TRUST, INC.
1420 Donelson Pike, Suite B-17 Nashville, Tennessee 37217
T: (615) 361-1257 F: 615-361-9856 www.firstindustrial.com



FOR LEASE

566 Mainstream Drive- Suite 700
Metro Center Business Park- Ten Center

Nashville, Tennessee



For more information
contact exclusive agent:

Clancy Hoban
Affiliate Broker
choban@chco.com

Established 1962



±11,275 Total Space

Suite 700

Available Space

Ten Center

Suite 700

Nashville, Tennessee

All information furnished regarding the property for sale, rental or financing is obtained from sources deemed reliable. No representation is made to the accuracy thereof and is submitted subject to errors, omissions, change of rental price or other conditions, prior sale, lease or financing, or withdrawal without notice. First Industrial Realty Trust, Inc. represents the Seller Lessor in this transaction and as such owes all duties and obligations thereto.

FIRST INDUSTRIAL REALTY TRUST, INC.
1420 Donelson Pike, Suite B-17 Nashville, Tennessee 37217
T: (615) 361-1257 F: 615-361-9856 www.firstindustrial.com

