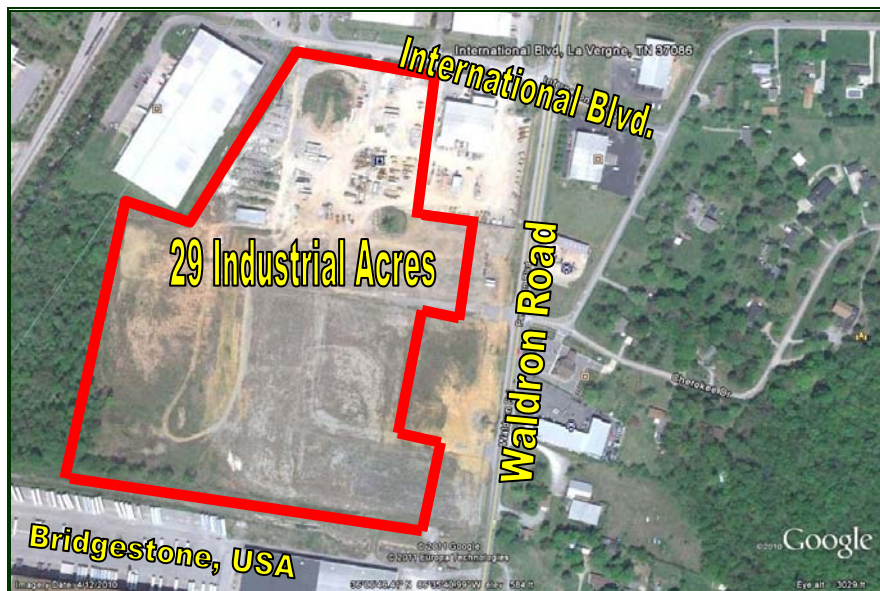


FOR SALE

WALDRON BUSINESS PARK

LAVERGNE/RUTHERFORD COUNTY

±29 Acre Industrial Site
(Will Divide)



- ±29 Industrial Acres - **Divisible**
- Zoned Industrial (Rutherford County I-2)
- Located on Waldron Road (b/w Murfreesboro Rd. @ I-24)
- Quick Access to I-24 (less than 1.5 Miles)
- Traffic Signal @ International Blvd.
- Waldron Road / Parthenon Pkwy is Being Widened to 5 Lanes by TDOT
- Sidewalks Planned for Waldron Rd. in Front of the Site
- 12" Water Main Located on International Blvd. & Parthenon Pkwy./Waldron Rd.
- 10" Sewer Main Located on International Blvd.
- Gas Line at Site

Sale Price: \$97,500.00 / Acre
\$2,827,500.00 / ±29 Acres

Exclusively Listed By:

Chas. Hawkins Co., Inc./CORFAC International

Robert Stout, SIOR

(615) 345-7210
rstout@chco.com

Chas. Hawkins Co., Inc./CORFAC International
776 Melrose Avenue, Nashville, Tennessee
615.256.3189 phone / 615.254.4026 facsimile

www.chashawkins.com

