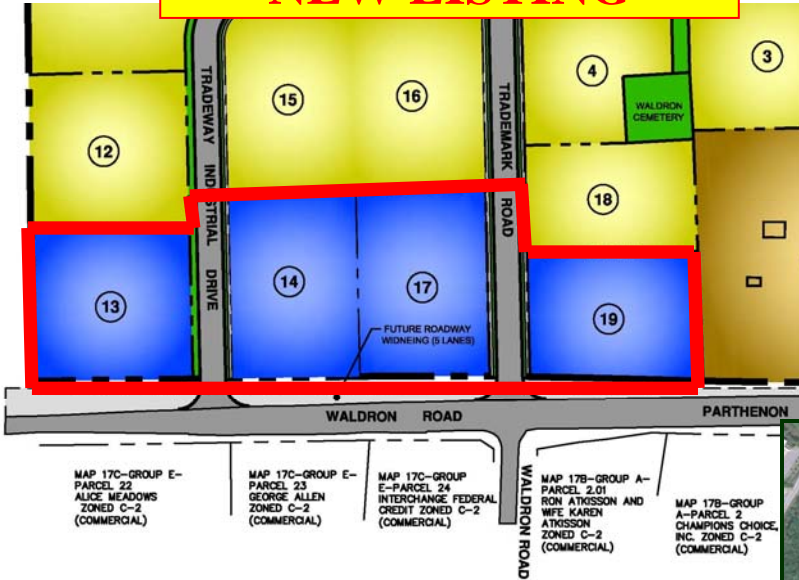


FOR SALE

WALDRON BUSINESS PARK LAVERGNE/RUTHERFORD COUNTY

**±4.85 Acre
Commercial
Site(s)**

NEW LISTING



- ±4.85 Commercial Acres w/4 Lots Ranging From 1.11 to 1.27 Acres
 - Lot 13 – 1.27 Ac. • Lot 14 – 1.21 Ac.
 - Lot 17 – 1.26 Ac. • Lot 19 – 1.11 Ac.
- Zoned Commercial (C-2 Highway Services)
- Located on Waldron Road (b/w Murfreesboro Rd. & I-24)
- Quick Access to I-24 (less than 1.5 Miles)
- Waldron Road / Parthenon Pkwy is Being Widened to 5 Lanes by TDOT
- Sidewalk Planned for Waldron Rd. in Front of the Site
- Traffic Signal @ International Blvd.
 - 12" Water Main Located on International Blvd. & Parthenon Pkwy./Waldron Rd.
 - 10" Sewer Main Located on International Blvd.
 - Gas Line at Site

**Sale Price: \$360,000.00 / Lot
\$1,295,000.00 / All**

Exclusively Listed By:

Chas. Hawkins Co., Inc./CORFAC International

Robert Stout, SIOR

(615) 345-7210
rstout@chco.com

Chas. Hawkins Co., Inc./CORFAC International
776 Melrose Avenue, Nashville, Tennessee
615.256.3189 phone / 615.254.4026 facsimile

www.chashawkins.com

